

Thunderchief Project

Version 2005December02

Copyright 2005 JD Sleep

Permission refused for posting/serving this file from any site other than www.generalguitargadgets.com

The Thunderchief distortion (Marshall 100watt Super Lead amp emulator). Schematic and information is at <http://www.runoffgroove.com>. This is the layout information for PCB building.

Bill of Materials

Resistors (1/4 watt rating)

1 – 470 ohm
3 – 1k
1 – 2k7 (2.7k)
2 – 4k7 (4.7k)
2 – 15k
1 – 33k
1 – 100k
1 – 220k
1 – 470k
2 – 1M

Pots (1/4 watt or higher rating)

1 – 1M Log
1 – 100k Log
4 – 100k Trimmer

Transistors

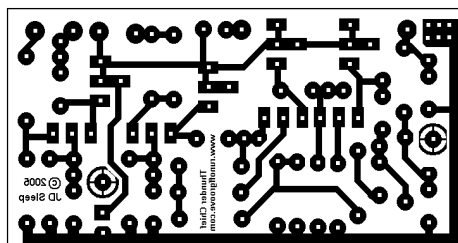
4 – J201

Capacitors (minimum 16 volt rating)

1 – 470pf film or ceramic
3 – 0.0022uF film or ceramic
1 – 0.015uF film or ceramic
3 – 0.022uF film or ceramic
1 – 0.1uF film or ceramic
2 – 0.68uF film or ceramic
1 – 100uF aluminum electrolytic

Other

1 – 3PDT or DPDT heavy duty foot switch (bypass)
1 – mono quarter inch jack
1 – stereo quarter inch jack
9v battery snaps & holder and/or DC jack, knobs, Copper-clad board, etchant, or perfboard
24 gauge stranded wire
Enclosure



Size 6.1cm x 3.2cm

Thunderchief Project

Version 2005December02

Copyright 2005 JD Sleep

Permission refused for posting/serving this file from any site other than www.generalguitargadgets.com

