

Rangemaster™ Treble Booster Replica Instructions

Version 2014December30

Copyright 2014 JD Sleep

Permission refused for posting/serving this file from any site other than www.generalguitargadgets.com

Trademarks are property of their owners



This is a replica of the **Rangemaster™ Treble Booster**. Follow the General Instructions and the Layout/Wiring Diagram. Note that the photos in these instructions are for the PNP Version Rangemaster. Remember to follow the layout/wiring diagram for the NPN version if you are using a NPN transistor or use the Charge Pump Version diagram if you are using a Charge pump (for power that can be shared with other negative ground stompboxes).

We recommend that you install the 390K R11 resistor so that you won't get bypass switch popping.

Rangemaster™ Treble Booster Replica Instructions

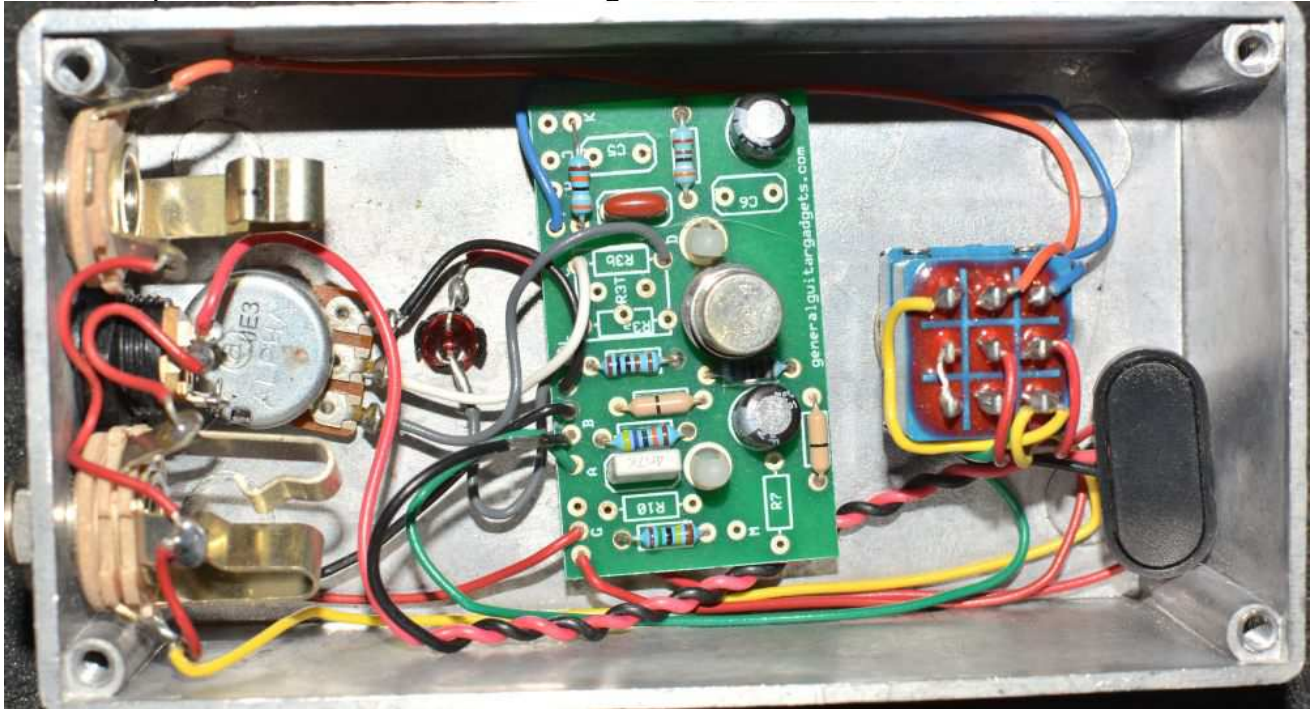
Version 2014December30

Copyright 2014 JD Sleep

Permission refused for posting/serving this file from any site other than www.generalguitargadgets.com

Trademarks are property of their owners

Here is a photo of the inside of the Rangemaster Treble booster.



Here is a chart of voltages taken at the germanium transistor pins. Use these voltages as a guideline. You may not get the exact readings listed, but should be somewhere in the area.

Component	Location	Voltage
9 volt power supply		9.2v
Q1 (Germanium)	Collector	7.2v
	Base	0.8v
	Emitter	0.7v