

## Geofex Amp A/B/Y Switch Project

Version 2006February07

Copyright 2006 JD Sleep

Permission refused for posting/serving this file from any site other than [www.generalguitargadgets.com](http://www.generalguitargadgets.com)

This A/B/Y switch provides transformer isolation on the outputs to reduce any chance of ground reference induced hum. Great for switching between amps.

### Bill of Materials

#### Resistors (1/4 watt rating)

- 1 – 1k
- 1 – 6k8 (6.8k)
- 2 – 4k7 (current limiting for LED)
- 8 – 10k
- 1 – 1M

#### ICs

- 2 – TL072 or similar Dual Opamp
- 1 – MAX1044 Charge Pump IC

#### Transistors

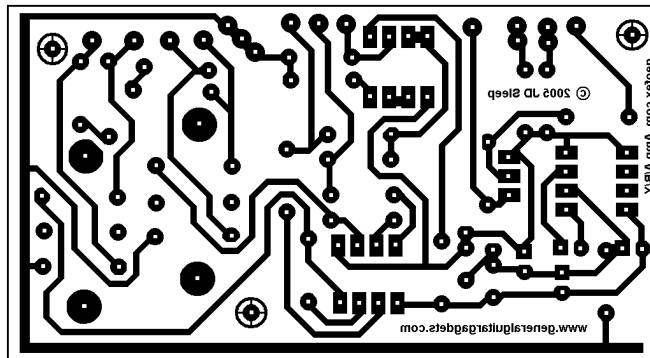
- 1 – 2N3906 or other similar bipolar PNP

#### Capacitors (minimum 16 volt rating)

- 2 – 0.001uF film
- 2 – 0.1uF film
- 2 – 10uF aluminum electrolytic
- 2 – 22uF aluminum electrolytic

#### Other

- 2 – 42TM018 transformers
- 2 – DPDT heavy duty foot switch (bypass)
- 2 – mono quarter inch jack
- 2 – nylon isolation washer sets
- 1 – stereo quarter inch jack
- 9v battery snaps & holder and/or DC jack
- knobs, Copper-clad board, etchant, or perfboard
- 24 gauge stranded wire
- Enclosure



Box size 8.7cm x 4.8cm

## Geofex Amp A/B/Y Switch Project

Version 2006February07

Copyright 2006 JD Sleep

Permission refused for posting/serving this file from any site other than [www.generalguitargadgets.com](http://www.generalguitargadgets.com)

