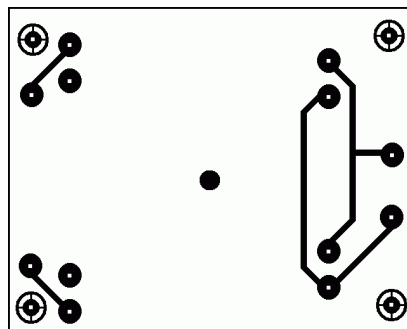
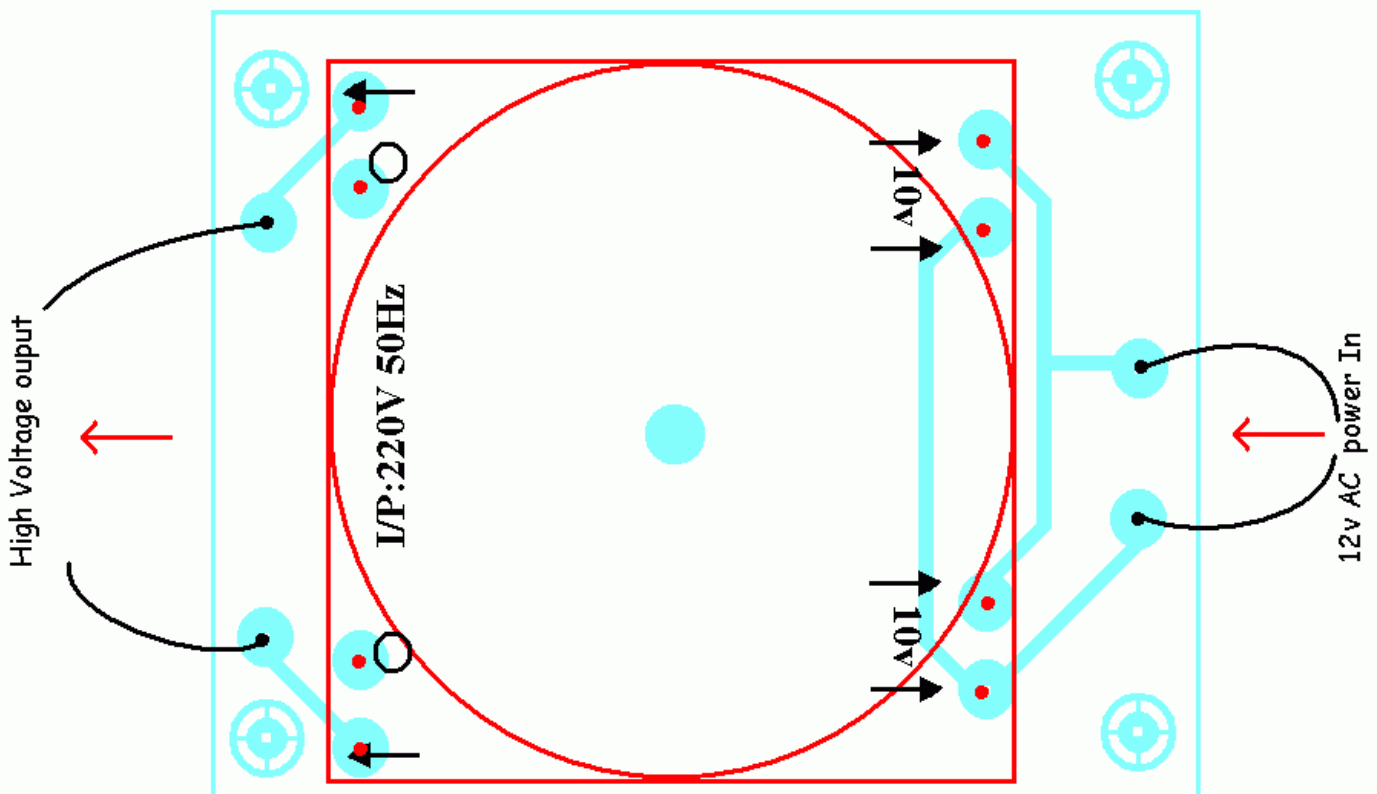


## EHX Toroidal Transformer Project File

Version: 2007October19

Copyright 2004 JD Sleep

This is the transformer used in the Electro Harmonix (EHX) tube effects, and is now available from EHX for DIY use! These diagrams show the proper hookup and can be used as a stand alone board for experimenting or the footprint can be integrated into a comprehensive PCB. Drill approximately 4.2mm hole in the middle of the board for a 4M bolt and washer to the middle of the bottom of the transformer. **Death can result from touching this high voltage output!**



size 5.4cm x 4.4cm